

# Labour Link



Autumn 08  
Reddish North Ward



The Canal Society's stand - Aiming to reopen the canal through Reddish

## HERITAGE DAY IN REDDISH

A very successful Heritage Day was held at Houldsworth Park on Saturday 13<sup>th</sup> September. The mills were open including the Houldsworth Engine House and Broadstone artists and crafts workshops. St Elisabeth's School and the Church, Friends of Reddish Station, the Reddish Canal Society and Reddish Buildings Preservation Trust (RBPT) all had exhibitions. RBPT has just submitted a £1million lottery fund bid to restore the engine house of Houldsworth Mill. We wish them luck.

## Reddish Vale Technology College - huge success

The school has become a Co-operative Trust owned by the students, the parents and local people and it's doing great things. GCSE results have increased by over 10% and the school is now aiming for a 60% pass rate to match the best schools in Stockport. Congratulations to everyone for a fantastic effort!

## Wharfedale Rd Pavements

Now that the work on doing up the pavements has started we expect a traffic count to take place to see if traffic calming and a 20mph speed limit can be justified.

### We need your views on this.

In addition we are calling for a 20mph speed limit on Naseby Road and Ilkley Crescent. Harrogate would need a 20mph zone so we can't mix that up with a 20mph limit unless David can fix it.



Wharfedale Rd Pavements – work started

## Alleygate Thornley Lane North Passage

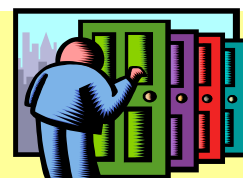
At long last the Council and Groundwork are going to have a serious look at gating the alley between Gorton Rd and Thornley Lane North. The study has been put in phase 2 of the programme. As cars use the alley the gates will have to be big enough to allow motorists in and out. Full consultation will take place before any decisions.

## Proposals for South Reddish station

A new tram link to Manchester has been suggested by a tram manufacturing company following an intervention by Andrew Gwynne MP. The Passenger Transport Executive is talking to the company's representatives. However we understand that the use of ordinary trains for the rail route to Manchester is preferred by the Friends of the station.

## Visiting you to hear what you think about local issues

Over the next year we are working to knock on doors of people in every street in North Reddish. Look out for us in Saturday mornings. We'll leave a small leaflet if you're not in so that you can contact us.





**The Council wants us to have four wheelie bins** for recycling and rubbish in two years time. One for un-recyclable rubbish, a green one for garden waste, one for plastic & glass bottles & tins and one for cardboard and paper & drinks cartons. In addition there will be a half sized bin for food. The food bin will be collected weekly and the other bins fortnightly so there should be no problem with flies and maggots. A fifth to a third of homes are flats and terraced houses, etc so they will need a different system. But even many semi-detached and detached houses in Reddish don't have gardens big enough to take all this.



**Wouldn't it be better for fewer bins to be used and the recycled materials sorted out at the waste plant? We would like to hear what you think about this proposal.**

**Luton Road - new pavements are needed!**

We are asking Tame Valley Committee to demand that the pavements on this road be put into the new pavement programme. Farley Way is next on the list however and is due to be done in 2009. We hope that Luton Rd will follow on behind Farley Way. In the meantime we have conducted a survey of people's preferences for the collection of rubbish on Luton Rd. The survey results have been passed on to the Refuse officers at the Council.



**Alleygate Wemyss Ave passage.**  
This will be considered properly, after foot dragging by the Council over the proposal. We await the conclusions with interest.

**Windmill Lane**  
We are seeking funding for a 20mph zone on Windmill Lane. We thought money would come from the new school to be built in the next two years, but that seems less likely now. We are still working on the problem.

**Visits to firms and schools**  
We are keen to visit schools and companies in the area and to talk to local businesses about the issues that concern them. Please contact us.  
**Tel: 432 2188**



**WINTER FUEL ALLOWANCE - REAL HELP WITH YOUR BILLS**

This year the winter fuel allowance will be £250 for the over sixties and £400 for those over eighty. We know that this increase will be welcome to help cope with the rising cost of fuel. Remember, the Tories dismissed this as a gimmick.

**REDDISH VALE UNDER REVIEW**  
Peter, Anne and David are taking part in a scrutiny review by the Council of the management of Reddish Vale Country Park. Many local residents have expressed concerns and the Review will, hopefully, come up with solutions that will deal with these problems and make sure that Reddish Vale is cared for properly.

**CLLR PETER SCOTT**  
Tel: 432 2188  
[scottscip@aol.com](mailto:scottscip@aol.com)

**CLLR DAVID OWEN**  
Tel: 432 5538  
[davidowen210@btinternet.com](mailto:davidowen210@btinternet.com)

**CLLR ANNE GRAHAM**  
Tel: 480 3688  
[cllr.anne.graham@stockport.gov.uk](mailto:cllr.anne.graham@stockport.gov.uk)

or write to North Reddish Councillors, Stockport Labour Club, Lloyd Street, Heaton Norris, SK4 1QP



